

S917

ON/OFF-ROAD TRACTION

Code	Size	LI / SR	PR	T.D.	RIM	O.D.	S.W.	S.L.R.	Load Capacity		
									32nds	in.	in.
8256851	11R22.5	148/145 G	16	31	8.25	42.1	10.9	19.6	6,940	6,390	123
8256841	12R22.5	150/147 G	16	31	9.00	43.5	12.1	20.2	7,390	6,780	120
1001252	11R24.5	149/146 G	16	31	8.25	43.9	11.0	20.6	7,160	6,610	120
8246837	12.00R24 ^	160/157 F	20	32	8.50	48.7	12.4	22.8	9,920	9,090	120

^ Denotes Tube Type

The Sailun S917 drive tire has been engineered to perform in demanding off-road conditions such as mining, construction and logging applications. The S917 features an aggressive multi-lug tread design for exceptional off-road traction and an enhanced rubber compound to resist cuts and chunking. Open shoulder ribs deliver superior stability and resistance to uneven wear. The S917's deep 31/32" tread depth provides long tread life and an exceptional cost per mile.

Features & Benefits

- Aggressive multi-lug design.
- Deep tread depth for excellent tread life.
- Open shoulder design for excellent traction.

Applications:

- Logging Trucks
- Ready Mix Trucks
- Refuse Trucks
- Dump Trucks



S917

ON/OFF-ROAD TRACTION



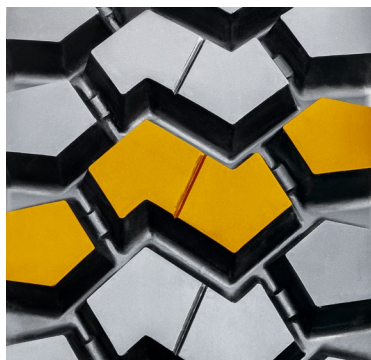
The Sailun S917 drive tire has been engineered to perform in demanding off-road conditions such as mining, construction and logging applications. The S917 features an aggressive multi-lug tread design for exceptional off-road traction and an enhanced rubber compound to resist cuts and chunking. Open shoulders deliver superior traction.

QUALITY:	Every Sailun S917 tire is tested for uniformity at the factory to ensure maximum ride comfort and quality performance.
WARRANTY:	All Sailun products are covered by an industry leading new 6-year warranty <small>* See Sailun Medium Radial Truck Tire Limited Warranty for complete details.</small>
RETREADABILITY:	Two Recap Casing Warranty with a Casing Retread Allowance.
COMPETITIVE PRODUCTS:	Michelin X WORKS XDY, Bridgestone L320

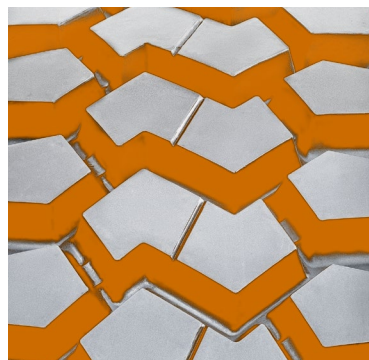


This tire provides a balance of traction and wear in construction and cement mixer applications. The center lug and open shoulders provide excellent traction in muddy conditions.

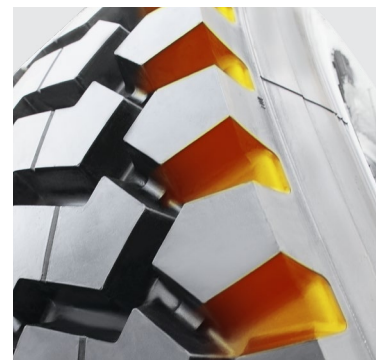
Aggressive multi-lug design.



Deep tread depth for excellent tread life.



Open shoulder design for excellent traction.



* Every effort had been made to verify the accuracy of the listed specifications. TBC Corporation and TBC Brands cannot be held responsible for any discrepancies, and as such, the information should be considered as approximate.