

S696 EFT

ULTRA-WIDE BASE TRAILER

Code	Size	LI / SR	PR	T.D.	RIM	O.D.	S.W.	S.L.R.	L.C.C.		
									32nds	in.	in.
									lbs.	lbs.	psi
5541470	445/50R22.5	161M	20	13	14.00	40.0	17.5	18.8	10,200	-	120

The S696 EFT is a long wearing 13/32nd tread depth tire designed for tandem trailer applications. The wide shoulder rib is designed to stand up to lateral scrubbing and resist irregular wear that is common in this application.

Features & Benefits

- Light weight to improve fuel economy.
- Long wearing for low cost per mile.
- Alternative low cost option for trade trailers.
- Smartway Verified for lower rolling resistance and excellent fuel efficiency on highways.

Applications:

- Tandem Trailers
- Tag Axle Trailers



SMARTWAY VERIFIED TIRE:

APPROVED FOR USE ON EPA SMARTWAY CERTIFIED EQUIPMENT



S696 EFT

ULTRA-WIDE BASE TRAILER



The new technology trailer tire from Sailun, the S696 EFT Ultra-Wide base trailer tire, has been added to the line-up for cost conscious users. Ideal for fleets looking to lower their overall gross vehicle weight in order to carry more load, the Sailun S696 EFT offers comparable performance to major brands at a lower acquisition price. The Sailun S696 EFT provides large fleets with trailer lease returns (requiring a new tire only) an alternative to higher cost competitive tires.

QUALITY: Factory testing for uniformity ensures maximum ride comfort and quality performance.

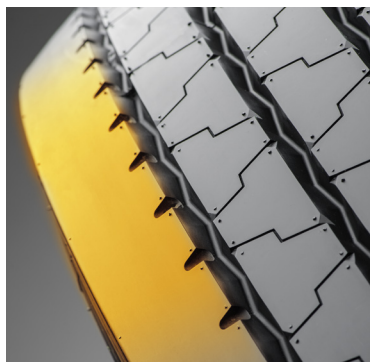
WARRANTY: All Sailun products are covered by an industry leading new 6-year warranty
* See Sailun Medium Radial Truck Tire Limited Warranty for complete details.

COMPETITIVE PRODUCTS: Bridgestone Ecopia R135 (11/32nds), Hankook TL07 (17/32nds)

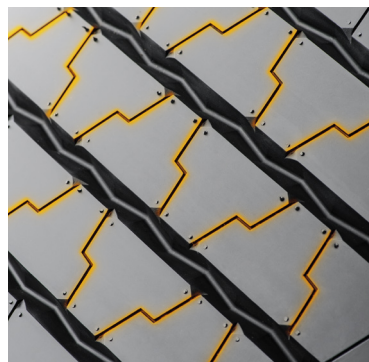


Engineered for mileage while promoting stability, handling and long life with even tread wear. Obtain Tier 2 quality at a significant savings with Sailun.

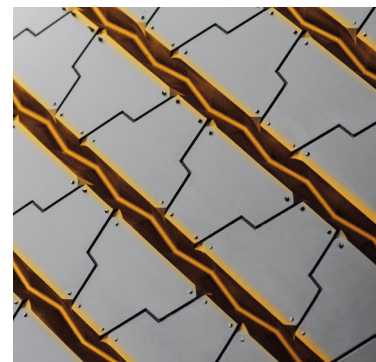
Wide Shoulder - provides stability in lateral scrub situations.



Tread Sipes - Provide extra grip in wet conditions.



Tread Void Area - Channel water in wet road conditions.



* Every effort had been made to verify the accuracy of the listed specifications.
TBC Corporation and TBC Brands cannot be held responsible for any discrepancies, and as such, the information should be considered as approximate.