

S668

REGIONAL ALL-POSITION / TRAILER

| Code | Size | LI / SR | PR | T.D. | RIM | O.D. | S.W. | S.L.R. | L.C.C. | | | | | | |
|---------|-------------|-----------|----|------|------|------|------|--------|--------|-------|-----|----|-----|-----|-----|
| | | | | | | | | | 32nds | in | in | in | lbs | lbs | psi |
| | | | | | | | | | | | | | | | |
| 5542483 | 11R22.5 | 146/143 M | 16 | 16 | 8.25 | 41.5 | 11.0 | 19.0 | 6,610 | 6,005 | 120 | | | | |
| 5542487 | 11R24.5 | 149/146 M | 16 | 16 | 8.25 | 43.5 | 11.0 | 20.0 | 7,160 | 6,610 | 120 | | | | |
| 5543368 | 255/70R22.5 | 140/137 L | 16 | 16 | 7.50 | 36.6 | 10.0 | 17.1 | 5,510 | 5,070 | 120 | | | | |
| 5542488 | 295/75R22.5 | 144/141 M | 14 | 16 | 9.00 | 39.9 | 11.7 | 19.0 | 6,175 | 5,675 | 110 | | | | |

The Sailun S668 is a regional tire designed for all positions and best suited for use on multi-axle and spread-axle trailers. The contoured shoulders and special Cut and Chip rubber compounding make the S668 ideal for use on multi-axle and spread-axle trailers.

Features & Benefits

- 5-Rib tread pattern promotes stable on road performance and even tread wear.
- Cut and Chip resistant rubber compound.
- Solid shoulder design promotes lateral stability for all positions.
- Wide tread footprint maximizes tread life.
- Stone ejectors protect tire against stone drilling.

Applications:

- Spread-Axle Trailers
- Multi-Axle Trailers
- Pick-up and Delivery Trucks
- Regional Trucks



S668

REGIONAL ALL-POSITION / TRAILER



The latest addition to the Sailun product line is the S668. Designed for the most extreme high scrub applications, this all-position tire has been engineered with multi-axle and spread-axle demands in mind. Designed to deliver lateral stability and maximize tread life due to the solid contoured shoulders and wide footprint design. The Sailun S668, demonstrates our continuous development and engineering expertise.

QUALITY: Every Sailun S668 tire is tested for uniformity at the factory to ensure maximum ride comfort and quality performance.

WARRANTY: All Sailun products are covered by an industry leading new 6 year warranty

RETREADABILITY: Two Recap Casing Warranty with a Casing Retread Allowance.
* See Sailun Medium Radial Truck Tire Limited Warranty for complete details.

COMPETITIVE PRODUCTS: Bridgestone R196



Contoured shoulders and cut and chip resistant rubber compound deliver exceptional service life in the most extreme high scrub trailer applications. Obtain Tier 2 quality at a significant savings with Sailun.

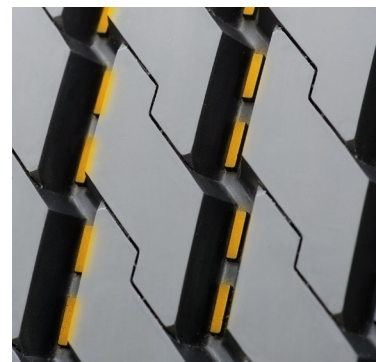
5-Rib tread pattern promotes stable road performance and even wear.



Contoured solid shoulder for high scrub applications.



Stone ejectors protect tire against stone drilling.



* Every effort had been made to verify the accuracy of the listed specifications.
TBC Corporation and TBC Brands cannot be held responsible for any discrepancies, and as such, the information should be considered as approximate.