

S665 EFT

STEER ALL-POSITION

Code	Size	LI / SR	PR	Load Capacity							
				T.D.	RIM	O.D.	S.W.	S.L.R.	Single	Dual	A.P.
				32nds	in.	in.	in.	in.	lbs.	lbs.	psi
5540147	11R22.5	144/142 M	14	18	8.25	41.5	10.9	19.3	6,175	5,840	105
5540148	11R22.5	146/143 M	16	18	8.25	41.5	10.9	19.3	6,610	6,005	120
5540150	11R24.5	146/143 M	14	18	8.25	43.5	10.9	20.3	6,610	6,005	105
5540151	11R24.5	149/146 M	16	18	8.25	43.5	10.9	20.3	7,160	6,610	120
5540149	295/75R22.5	144/141 M	14	18	9.00	39.9	11.7	19.4	6,175	5,675	110
5540152	285/75R24.5	144/141 M	14	18	8.25	41.3	11.1	18.7	6,175	5,675	110

The Sailun S665 EFT is an all-position radial truck tire optimized for steer axles. This tire is engineered for use in regional, interstate and metro applications on a large array of vehicle platforms.

Features & Benefits

- Micro-sipes within groove walls for enhanced traction in all weather conditions.
- Variable tread angles for self-cleaning and stone ejection.
- Reinforced sidewall for increased tread life.
- Smartway Verified for lower rolling resistance and excellent fuel efficiency on highways.

Applications:

- Intrastate and Interstate Buses
- Regional Trucks
- Freight Trucks
- Local Buses
- Pick-up and Delivery Trucks
- Tractor Trailers



S665 EFT

STEER ALL-POSITION



=



The Sailun S665-EFT is an all position truck tire optimized for steer axles. Engineered to provide enhanced traction in all weather conditions for the regional, interstate and metro driver. The Sailun S665-EFT delivers exceptional mileage and traction, why settle for less?

QUALITY: Every Sailun S665 tire is tested for uniformity at the factory to ensure maximum ride comfort and quality performance.

WARRANTY: All Sailun products are covered by an industry leading new 6-year warranty
* See Sailun Medium Radial Truck Tire Limited Warranty for complete details.

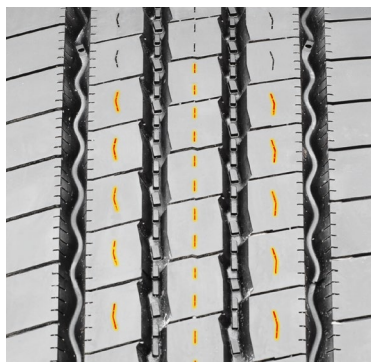
RETREADABILITY: Two Recap Casing Warranty with a Casing Retread Allowance.

COMPETITIVE PRODUCTS: Michelin X MULTI ENERGY Z, Bridgestone R250ED

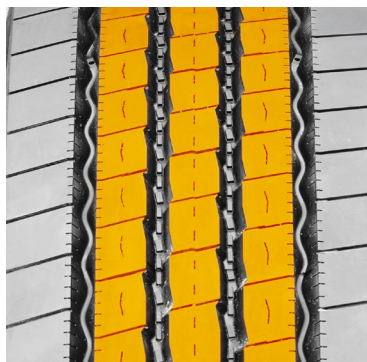


Reinforced sidewall improves the tread life on this all position tire designed for multiple applications. Solid shoulder rib resists lateral scrub wear in regional applications. Obtain Tier 2 quality at a significant savings with Sailun.

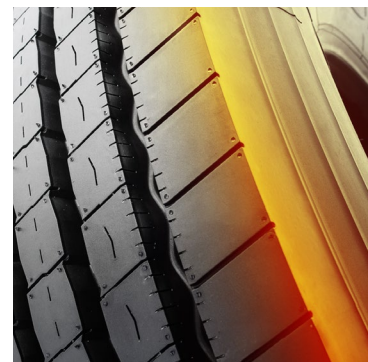
Micro-sipes within groove walls for enhanced traction in all weather conditions.



Variable tread angles for self-cleaning and stone ejection.



Reinforced sidewall for increased tread life.



* Every effort had been made to verify the accuracy of the listed specifications. TBC Corporation and TBC Brands cannot be held responsible for any discrepancies, and as such, the information should be considered as approximate.