

S622 EFT

FREE-ROLLING POSITION TRAILER

Code	Size	LI / SR	PR	T.D.	RIM	O.D.	S.W.	S.L.R.	L.C.C.							
									32nds	in.	in.	in.	in.	lbs.	lbs.	psi
1001302	11R22.5	144/142 M	14	12	8.25	41.3	10.9	19.2	6,175	5,840	105					
1001306	11R24.5	146/143 M	14	12	8.25	43.2	10.9	20.2	6,610	6,005	105					
8245385 *	255/70R22.5	140/137 L	16	14	7.50	36.5	9.7	17.0	5,510	5,070	120					
1001286	295/75R22.5	144/141 M	14	12	9.00	39.8	10.8	18.6	6,175	5,675	110					
1001304	285/75R24.5	144/141 M	14	12	8.25	41.1	10.8	19.3	6,175	5,675	110					

* Non-EFT Tire

The S622 EFT is a premium free-rolling position trailer tire. With a decoupling groove that resists irregular sidewall wear, and wide ribs to prevent damage caused by high-scrub applications, the S622 EFT is also a low-rolling resistance tire designed to maximize your mileage.

Features & Benefits

- Decoupling grooves help minimize irregular wear.
- V-sipes improve traction in wet conditions and dissipate heat for prolonged tread life.
- Main groove stone ejectors protect tire against stone drilling.
- 5 full depth grooves for excellent traction in wet and dry conditions.
- Smartway Verified for lower rolling resistance and excellent fuel efficiency on highways.

Applications:

- Free-Rolling Wheel Positions
- Tandem Trailers
- Tag Axles



SMARTWAY VERIFIED TIRE:
APPROVED FOR USE ON EPA SMARTWAY CERTIFIED EQUIPMENT

S622 EFT

FREE-ROLLING POSITION TRAILER



Why spend more than necessary on your Free-Rolling Trailer tires? Sailun's S622 EFT is a shallow tread low rolling resistance trailer tire designed to maximize your mileage at a fraction of the price.

QUALITY: Sailun technology and quality of the S622 EFT has been approved for use on EPA Smartway certified equipment.

WARRANTY: All Sailun products are covered by an industry leading new 6 year warranty.

RETREADABILITY: Two Recap Casing Warranty with a Casing Retread Allowance.
* See Sailun Medium Radial Truck Tire Limited Warranty for complete details.

COMPETITIVE PRODUCTS: Michelin XT-1, Goodyear G316 LHT, Bridgestone R197 Ecopia

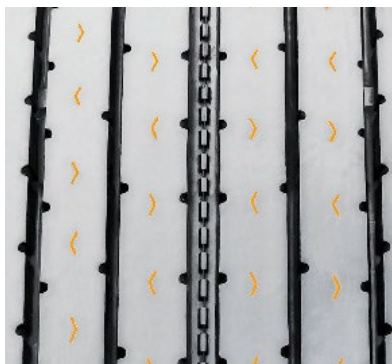


Premium construction and even wearing tread design provides durability and retreadability. Wide ribs avoid damage in high-scrub applications. Top tier quality at significant savings.

V-sipes improve traction in wet conditions and dissipate heat for prolonged tread life.

Main groove stone ejectors protect tire against stone drilling.

5 full depth grooves for excellent traction in wet and dry conditions.



* Every effort had been made to verify the accuracy of the listed specifications. TBC Corporation and TBC Brands cannot be held responsible for any discrepancies, and as such, the information should be considered as approximate.