

# S606 EFT

## PREMIUM STEER ALL-POSITION



Code	Size	LI / SR	PR	L.C.C.							
				T.D.	RIM	O.D.	S.W.	S.L.R.	Single	Dual	A.P.
				32nds	in.	in.	in.	in.	lbs.	lbs.	psi
5543258	11R22.5	144/142 M	14	21	8.25	41.6	10.9	19.4	6,175	5,840	105
5543001	11R22.5	146/143 M	16	21	8.25	41.6	10.9	19.4	6,610	6,005	120
5543248	11R24.5	146/143 M	14	21	8.25	43.6	10.9	20.4	6,610	6,005	105
5542984	11R24.5	149/146 M	16	21	8.25	43.6	10.9	20.4	7,160	6,610	120
8245141	12R22.5*	152/148 M	16	21	9.00	42.7	12.1	19.9	7,830	6,940	123
1001398	295/75R22.5	144/141 L	14	21	9.00	39.9	11.7	18.8	6,175	5,675	110
8255184	295/80R22.5*	152/148 M	16	21	9.00	41.1	11.6	19.4	7,830	6,940	123
8244197	315/80R22.5*	156/150 L	18	20	9.00	42.6	12.1	19.8	8,820	7,380	125
1001400	285/75R24.5	144/141 L	14	21	8.25	41.3	10.8	19.5	6,175	5,675	110

\* Non-EFT Tire

The S606 EFT is Sailun's premium steer tire, providing superior service for both Metro/Urban deliveries. This tire features extra wide shoulders with built-in sipes for excellent stability and traction under all weather conditions. An extra deep 21/32" tread depth ensures the S606 EFT delivers exceptional mileage, while an interlocking symmetrical tread block design promotes even wear and a square footprint.

### Features & Benefits

- Wide footprint and square shoulder design for improved stability and mileage.
- Extra deep tread pattern (21/32") with special compound for extended tread life.
- Multi-sipes improve traction in wet conditions and dissipate heat for prolonged tread life.
- Unique tread wall grooves help reduce irregular wear and improve traction.
- Stone ejectors protect tire from stone drilling.
- Smartway Verified for lower rolling resistance and excellent fuel efficiency on highways.

### Applications:

- Intrastate & Interstate Buses
- Regional Trucks
- Pickup & Delivery Trucks
- Tractor Trailers



**SMARTWAY VERIFIED TIRE:**  
APPROVED FOR USE ON EPA SMARTWAY CERTIFIED EQUIPMENT



# S606 EFT

PREMIUM STEER ALL-POSITION



Ideally suited for regional pickups and deliveries, the wide footprint and square shoulder design of the Sailun S606 EFT Premium Steer All-Position tire improves stability and delivers exceptional mileage performance. Running local deliveries can be costly, why settle for less when you can get Tier 2 quality at a significant cost savings?

**QUALITY:** Every Sailun S606 EFT premium steer all-position tire is tested for uniformity at the factory to ensure maximum ride comfort and quality performance.

**WARRANTY:** All Sailun products are covered by an industry leading new 6 year warranty.

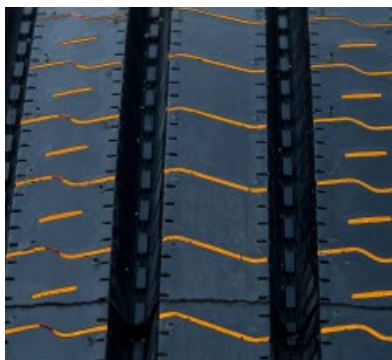
**RETREADABILITY:** Two Recap Casing Warranty with a Casing Retread Allowance.  
\* See Sailun Medium Radial Truck Tire Limited Warranty for complete details.

**COMPETITIVE PRODUCTS:** Michelin XZE-2, Bridgestone R268 Ecopia, Goodyear Fuel Max RSA/ Endurance RSA

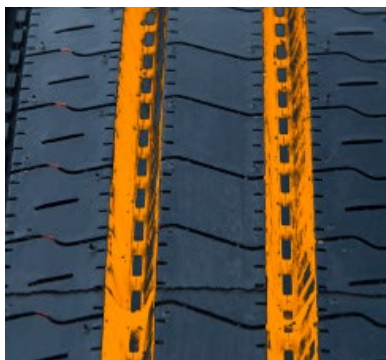


Unique tread wall grooves help reduce irregular wear and dissipate heat for prolonged tread life. Excellent performance in wet conditions and multi-siping improves traction. The S606 EFT is Smartway verified to provide low rolling resistance for improved fuel economy and cost savings. Obtain Tier 2 quality at a significant savings with Sailun.

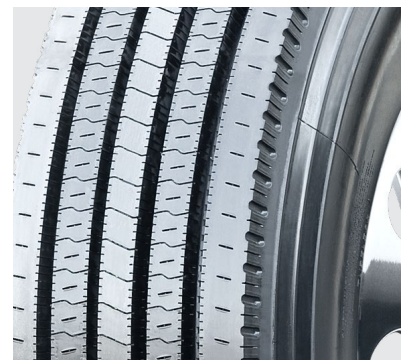
Multi-sipes improve traction in wet conditions and dissipate heat for prolonged tread life.



Stone ejectors protect tire from stone drilling.



Wide footprint and square shoulder design for improved stability and mileage.



\* Every effort had been made to verify the accuracy of the listed specifications. TBC Corporation and TBC Brands cannot be held responsible for any discrepancies, and as such, the information should be considered as approximate.