



SAILUN ADVANTAGE

What differentiates SAILUN from all the competition is its incredible value. A combination of outstanding quality, competitive pricing, expansive product selection, enhanced warranties and multiple retreads. We call this the, "SAILUN Advantage".

SAILUN offers high-quality products that are well recognized in the industry for their outstanding retreadability. When you look at SAILUN's total tire lifecycle – from the competitive purchase price to the superior casing warrantied for two retreads – it's clear that the value and profitability of the SAILUN Advantage has CHANGED THE GAME!

The SAILUN Advantage has No Comparison. No other commercial tire in this category offers more.



SAILUN EFT PROGRAM

ENVIRONMENTALLY FRIENDLY TECHNOLOGY

SmartWay® Verified Technologies Low Rolling Resistance Tires

The EPA has determined that certain tire models can reduce NOx emissions and fuel use by 3 percent or more, relative to the best selling new tires for line haul trucks, when used on all five axles on long haul Class 8 trucks[1].

Sailun is proud to introduce the S605 EFT, S606 EFT, S665 EFT, S622 EFT, S696 EFT, S768 EFT and the S753 EFT as SmartWay Verified Low Rolling Resistance tires. At Sailun, the EFT program is our ongoing commitment to the environment and to our customers to deliver more for your investment while minimizing environmental impacts.

EPA SMARTWAY® VERIFIED TECHNOLOGIES

SmartWay® Verified Technologies, developed by the United States Environmental Protection Agency, is a public / private collaboration between the USEPA and the freight transportation industry that helps freight shippers, carriers, and logistics companies improve fuel-efficiency and save money.

[1] <http://www.epa.gov/smartway/forpartners/technology.htm>



SIZE CHART

	LONG HAUL EFT			REGIONAL											MIXED SERVICE				ON/OFF-ROAD	
	LHS	CSD	TRL	TRL	STR	STR/AP	STR/AP	AP/TRL	AP/TRL	DRV	DRV A/S	DRV A/S	OSD	AP	AP	WIDE	DRV	TRAC	TRAC	
SIZE:	S605 EFT	S768 EFT	S622 EFT	S696 EFT	S606 EFT	S665 EFT	S698	S637 S637T^	S668	S737	S757	S740	SW01	S753 EFT	S811	S815	S825	S911	S758	S917
ST235/80R16								G^												
ST235/85R16								G^												
215/75R17.5								H		H										
235/75R17.5								H												
245/70R17.5								J												
225/70R19.5								G		G		G								
245/70R19.5								G		G/H		H								
265/70R19.5								H												
9.00R20 (SET)															H					
10.00R20 (SET)															J			J		
11.00R20 (SET)															J					
9R22.5								G												
10R22.5								G						G						
11R22.5	G/H	G/H	G		G/H	G/H			H		H		H	G/H		H			H	H
12R22.5					H*											H				H
295/80R22.5					H*															
315/80R22.5					J*		L									L				
295/75R22.5	G/H	G	G		G	G			G					G						
255/70R22.5			H*					H	H					H*		H				
275/70R22.5								H								H				
385/65R22.5																	J			
425/65R22.5																	L			
445/65R22.5																	L			
445/50R22.5				L																
12.00R24 (SET)																				L
11R24.5	G/H	G/H	G		G/H	G/H			H		H		H	G/H		H			H	H
285/75R24.5	G/H	G	G		G	G								G						

* Denotes non-EFT tire

^ Denotes trailer tire only



TABLE OF CONTENTS

6	S605 EFT - PREMIUM LINE-HAUL STEER
8	S606 EFT - PREMIUM STEER ALL-POSITION
10	S665 EFT - STEER ALL-POSITION
12	S698 - PREMIUM REGIONAL ALL-POSITION
14	S637 - REGIONAL ALL-POSITION
16	S668 - REGIONAL ALL-POSITION / TRAILER
18	S622 EFT - FREE-ROLLING POSITION TRAILER
20	S696 EFT - ULTRA-WIDE BASE TRAILER
22	S637T - HD ST TRAILER
24	S768 EFT - CLOSED SHOULDER DRIVE
26	S757 - SUPER REGIONAL ALL WEATHER DRIVE
28	S753 EFT - OPEN SHOULDER DRIVE
30	SW01 - ALL SEASON PREMIUM REGIONAL DRIVE
32	S740 - REGIONAL METRO ALL WEATHER DRIVE
34	S737 - REGIONAL METRO DRIVE
36	S811 - MIXED SERVICE ALL-POSITION
38	S815 - MIXED SERVICE ALL-POSITION
40	S825 - MIXED SERVICE WIDE BASE
42	S911 - MIXED SERVICE DRIVE
44	S758 - ON/OFF-ROAD TRACTION
46	S917 - ON/OFF-ROAD TRACTION
48	MEDIUM RADIAL TRUCK LIMITED WARRANTY

ABBREVIATIONS

Code	Product Code
Size	Size
L.I.	Load Index
S.R.	Speed Symbol
P.R.	Ply Rating
T.D.	Tread Depth (32nds)
RIM	Rim Width (in)
O.D.	Overall Diameter (in)
S.W.	Section Width (in)
S.L.R.	Static Load Radius (in)
A.P.	Air Pressure (psi)
EFT	EFT Series Smartway Verified

SAILUN **S605** PREMIUM LINE-HAUL STEER

Code	Size	LI / SR	PR	T.D.	RIM	O.D.	S.W.	S.L.R.	Load Capacity		
				32nds	in.	in.	in.	in.	Single	Dual	A.P.
									lbs.	lbs.	psi
8200179	11R22.5	144/142 M	14	18	8.25	41.3	10.9	19.3	6,175	5,840	105
8200180	11R22.5	146/143 M	16	18	8.25	41.3	10.9	19.3	6,610	6,005	120
8200187	11R24.5	146/143 M	14	18	8.25	43.4	10.9	20.3	6,610	6,005	105
8200182	11R24.5	149/146 M	16	18	8.25	43.4	10.9	20.3	7,160	6,610	120
8200183	295/75R22.5	144/141 M	14	18	9.00	40.0	10.8	18.7	6,175	5,675	110
8200184	295/75R22.5	146/143 M	16	18	9.00	40.0	10.8	18.7	6,610	6,005	120
8200185	285/75R24.5	144/141 M	14	18	8.25	41.4	10.8	19.4	6,175	5,675	110
8200186	285/75R24.5	147/144 M	16	18	8.25	41.4	10.8	19.4	6,780	6,175	120



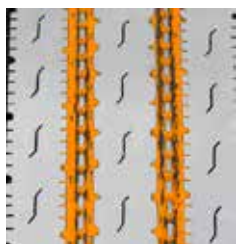
The S605 EFT is Sailun's premium line-haul steer tire, featuring a decoupling groove and five wide ribs for a stable ride at all speeds. Stone ejectors minimize tire damage, while extra-wide grooves and S-sipes improve traction for excellent hydroplaning resistance.

Features & Benefits

- Decoupling groove helps to minimize irregular wear.
- S-sipes improve traction in wet conditions and dissipate heat for prolonged tread life.
- Unique tread wall bite edges reduce irregular wear and improve traction.
- Stone ejectors protect tire from stone drilling.
- SmartWay Verified for lower rolling resistance and excellent fuel efficiency on highways.

Applications:

- Line-Haul Trucks
- Intrastate and Interstate Buses
- Regional Trucks





S605 EFT

SAILUN **S606** PREMIUM STEER ALL-POSITION

Code	Size	LI / SR	PR	T.D. 32nds	RIM in.	O.D. in.	S.W. in.	S.L.R. in.	Load Capacity		
									Single lbs.	Dual lbs.	A.P. psi
5543258	11R22.5	144/142 M	14	21	8.25	41.6	10.9	19.4	6,175	5,840	105
5543001	11R22.5	146/143 M	16	21	8.25	41.6	10.9	19.4	6,610	6,005	120
5543248	11R24.5	146/143 M	14	21	8.25	43.6	10.9	20.4	6,610	6,005	105
5542984	11R24.5	149/146 M	16	21	8.25	43.6	10.9	20.4	7,160	6,610	120
8245141	12R22.5*	152/148 M	16	21	9.00	42.7	12.1	19.9	7,830	6,940	123
1001398	295/75R22.5	144/141 L	14	21	9.00	39.9	11.7	18.8	6,175	5,675	110
8255184	295/80R22.5*	152/148 M	16	21	9.00	41.1	11.6	19.4	7,830	6,940	123
8244197	315/80R22.5*	156/150 L	18	20	9.00	42.6	12.1	19.8	8,820	7,380	125
1001400	285/75R24.5	144/141 L	14	21	8.25	41.3	10.8	19.5	6,175	5,675	110

* Non-EFT Tire



The S606 EFT is Sailun's premium steer tire, providing superior service for both Metro/Urban deliveries. This tire features extra-wide shoulders with built-in sipes for excellent stability and traction under all weather conditions. An extra-deep 21/32" tread depth ensures the S606 EFT delivers exceptional mileage, while an interlocking symmetrical tread block design promotes even wear and a square footprint.

Features & Benefits

- Wide footprint and square shoulder design for improved stability and mileage.
- Extra-deep tread pattern (21/32") with special compound for extended tread life.
- Multi-sipes improve traction in wet conditions and dissipate heat for prolonged tread life.
- Unique tread wall grooves help reduce irregular wear and improve traction.
- Stone ejectors protect tire from stone drilling.
- SmartWay Verified for lower rolling resistance and excellent fuel efficiency on highways.

Applications:

- Intrastate and Interstate Buses
- Regional Trucks
- Pickup and Delivery Trucks
- Tractor Trailers

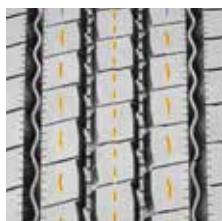




S606 EFT

SAILUN **S665** STEER ALL-POSITION

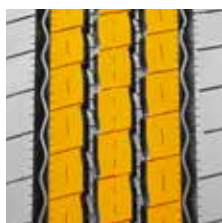
Code	Size	LI / SR	PR	T.D.	RIM	O.D.	S.W.	S.L.R.	Load Capacity		
									Single	Dual	A.P.
				32nds	in.	in.	in.	in.	lbs.	lbs.	psi
5540147	11R22.5	144/142 M	14	18	8.25	41.5	10.9	19.3	6,175	5,840	105
5540148	11R22.5	146/143 M	16	18	8.25	41.5	10.9	19.3	6,610	6,005	120
5540150	11R24.5	146/143 M	14	18	8.25	43.5	10.9	20.3	6,610	6,005	105
5540151	11R24.5	149/146 M	16	18	8.25	43.5	10.9	20.3	7,160	6,610	120
5540149	295/75R22.5	144/141 M	14	18	9.00	39.9	11.7	19.4	6,175	5,675	110
5540152	285/75R24.5	144/141 M	14	18	8.25	41.3	11.1	18.7	6,175	5,675	110



The Sailun S665 EFT is an all-position radial truck tire optimized for steer axles. This tire is engineered for use in regional, interstate and metro applications on a large array of vehicle platforms.

Features & Benefits

- Micro-sipes within groove walls for enhanced traction in all weather conditions.
- Variable tread angles for self-cleaning and stone ejection.
- Reinforced sidewall for increased tread life.
- SmartWay Verified for lower rolling resistance and excellent fuel efficiency on highways.



Applications:

- Intrastate and Interstate Buses
- Regional Trucks
- Freight Trucks
- Local Buses
- Pick-up and Delivery Trucks
- Tractor Trailers





S665 EFT



S698 PREMIUM REGIONAL ALL-POSITION

Code	Size	LI / SR	PR	T.D.	RIM	O.D.	S.W.	S.L.R.	Load Capacity		
				32nds	in.	in.	in.	in.	Single	Dual	A.P.
									lbs.	lbs.	psi
5543385	315/80R22.5	157/154 L	20	17	9.00	42.4	12.3	19.7	9,090	8,270	130



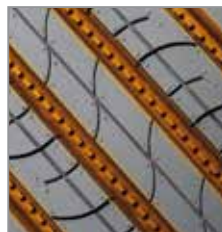
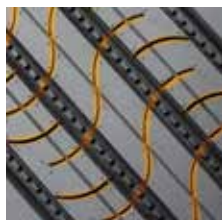
The S698 is a premium all-position regional tire, designed with extra wide shoulder ribs that resist curbing damage and stone ejectors to reduce stone retention. Full-length sipes built into tread ribs effectively channel water for exceptional wet traction. The S698 is very versatile and suitable on all regional applications, such as buses and refuse trucks.

Features & Benefits

- 5-rib design and wide shoulders for improved stability.
- Tread profile designed to reduce rolling resistance and improve fuel economy.
- Interlocking multi-sipes improve traction in wet conditions and increase stability.

Applications:

- Coach Buses
- Local Buses
- Regional Trucks
- Refuse Trucks
- Motor Home Coaches





S698

SAILUN **S637** REGIONAL ALL-POSITION

Code	Size	LI / SR	PR	T.D.	RIM	O.D.	S.W.	S.L.R.	Load Capacity		
				32nds	in.	in.	in.	in.	Single	Dual	A.P.
									lbs.	lbs.	psi
8244379	215/75R17.5	135/133 L	16	16	6.00	30.4	8.1	14.2	4,805	4,540	125
8244381	235/75R17.5	143/141 L	16	17	6.75	31.6	8.9	14.7	6,005	5,675	125
1001319	245/70R17.5	143/141 J	18	17	7.50	31.0	9.7	14.4	6,005	5,675	125
8244383	225/70R19.5	128/126 L	14	16	6.75	32.0	8.6	14.9	3,970	3,750	110
8254387	245/70R19.5	133/131 M	14	17	7.50	33.1	9.6	15.4	4,540	4,300	110
5542989	245/70R19.5	136/134 M	16	16	7.50	33.0	9.7	15.4	4,940	4,675	120
8244332	265/70R19.5	140/138 M	16	18	7.50	34.2	10.2	15.8	5,510	5,205	112
1001373	9R22.5	136/134 M	14	18	6.75	38.7	9.0	18.0	4,940	4,675	120
1001468	10R22.5	141/139 M	14	19	7.50	40.1	10.0	18.7	5,675	5,355	115
8254389	255/70R22.5	140/137 M	16	18	7.50	36.7	9.7	17.1	5,510	5,070	120
8254392	275/70R22.5	148/145 M	16	19	8.25	37.9	10.7	17.6	6,940	6,395	130



The S637 is a versatile regional all-position tire, featuring five extra-wide ribs for exceptional stability at all speeds. An extra-wide solid shoulder resists damage caused by high-scrub applications, while a mirrored tread design ensures even wear. Wide grooves are designed for hydroplaning resistance, while a long-life rubber compound is engineered for extended tread life.

Features & Benefits

- Multi-sipes improve traction in wet conditions and dissipate heat for prolonged tread life.
- Tread pattern designed to reduced rolling resistance for improved fuel economy.
- Unique tread wall grooves help reduce irregular wear and improve traction.

Applications:

- Pickup and Delivery Trucks
- Regional Trucks
- Regional Trailers
- Low Platform Trailers
- Intrastate and Interstate Buses
- RV's
- Tow Trucks





S637



SAILUN S668

REGIONAL ALL-POSITION / TRAILER

Code	Size	LI / SR	PR	T.D.	RIM	O.D.	S.W.	S.L.R.	Load Capacity		
									Single	Dual	A.P.
				32nds	in.	in.	in.	in.	lbs.	lbs.	psi
5542483	11R22.5	146/143 M	16	16	8.25	41.5	11.0	19.0	6,610	6,005	120
5542487	11R24.5	149/146 M	16	16	8.25	43.5	11.0	20.0	7,160	6,610	120
5543368	255/70R22.5	140/137 L	16	16	7.50	36.6	10.0	17.1	5,510	5,070	120
5542488	295/75R22.5	144/141 M	14	16	9.00	39.9	11.7	19.0	6,175	5,675	110



The Sailun S668 is a regional radial tire designed for all positions and best suited for use on multi-axle and spread-axle trailers. The contoured shoulders and special Cut and Chip rubber compounding make the S668 ideal for use on multi-axle and spread-axle trailers.

Features & Benefits

- 5-Rib tread pattern promotes stable on-road performance and even tread wear.
- Cut and Chip resistant rubber compound.
- Solid shoulder design promotes lateral stability for all positions.
- Wide tread footprint maximizes tread life.

Applications:

- Spread-Axle Trailers
- Multi-Axle Trailers
- Pick-up and Delivery Trucks
- Regional Trucks





S668



S622 EFT FREE-ROLLING POSITION TRAILER

Code	Size	LI / SR	PR	T.D.	RIM	O.D.	S.W.	S.L.R.	Load Capacity		
									Single	Dual	A.P.
				32nds	in.	in.	in.	in.	lbs.	lbs.	psi
1001302	11R22.5	144/142 M	14	12	8.25	41.3	10.9	19.2	6,175	5,840	105
1001306	11R24.5	146/143 M	14	12	8.25	43.2	10.9	20.2	6,610	6,005	105
8245385*	255/70R22.5*	140/137 L	16	14	7.50	36.5	9.7	17.0	5,510	5,070	120
1001286	295/75R22.5	144/141 M	14	12	9.00	39.8	10.8	18.6	6,175	5,675	110
1001304	285/75R24.5	144/141 M	14	12	8.25	41.1	10.8	19.3	6,175	5,675	110

* Non-EFT Tire



The S622 EFT is a premium free-rolling position trailer tire. The tread pattern features a decoupling groove to resist irregular wear and wide ribs to prevent damage caused by high-scrub applications. The S622 EFT is also a low-rolling resistance tire designed to maximize your mileage and fuel economy.

Features & Benefits

- Decoupling grooves help minimize irregular wear.
- V-sipes improve traction in wet conditions and dissipate heat for prolonged tread life.
- Main groove stone ejectors protect tire against stone drilling.
- 5 full-depth grooves for excellent traction in wet and dry conditions.
- SmartWay Verified for lower rolling resistance and excellent fuel efficiency on highways.

Applications:

- Tandem Trailers
- Tag Axles





S622 EFT

SAILUN **S696** **ULTRA-WIDE BASE TRAILER**

Code	Size	LI / SR	PR	T.D.	RIM	O.D.	S.W.	S.L.R.	Load Capacity		
				32nds	in.	in.	in.	in.	Single	Dual	A.P.
									lbs.	lbs.	psi
5541470	445/50R22.5	161 M	20	13	14.00	40.0	17.5	18.8	10,200	-	120



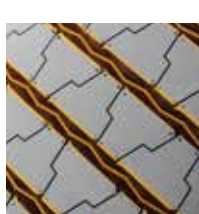
The S696-EFT is a long-wearing 13/32nd tread depth tire, designed for tandem trailer applications. The wide shoulder rib is designed to stand up to lateral scrubbing and resist irregular wear that is common in this application.

Features & Benefits

- Light-weight to improve fuel economy
- Long-wearing for low cost per mile
- Alternative low-cost option for trade trailers
- SmartWay Verified

Applications:

- Tandem Trailers
- Tag Axle Trailers





S696 EFT

SAILUN **S637T** HD ST TRAILER

Code	Size	LI / SR	PR	T.D.	RIM	O.D.	S.W.	S.L.R.	Load Capacity		
									Single	Dual	A.P.
				32nds	in.	in.	in.	in.	lbs.	lbs.	psi
5541960*	ST235/80R16	129/125 L	14	10	6.50	30.8	9.3	14.7	4,080	3,640	110
5540993*	ST235/85R16	132/127 L	14	12	6.50	31.7	9.3	14.7	4,400	3,860	110

* Requires special high-load capacity wheel. Consult wheel manufacturer for proper application.



The Sailun S637T is an all-steel highway rib tire designed to provide the ultimate in performance for trailer applications. The heavy-duty all-steel construction delivers low rolling resistance, superior strength and durability, while providing sure footing and straight tracking. The S637T is perfect for all high-load capacity trailer applications.

Features & Benefits

- All-steel construction for maximum strength and load capacity.
- Multi-sipes improve traction in wet conditions and dissipate heat for prolonged tread life.
- Five-rib design for improved stability.
- Solid shoulder to resist irregular wear and improve fuel efficiency.

Applications:

- RV Trailers
- 5th Wheel Trailers
- Utility Trailers
- Boat Trailers





S637T



S768 ^{EFT} CLOSED SHOULDER DRIVE

Code	Size	LI / SR	PR	T.D.	RIM	O.D.	S.W.	S.L.R.	Load Capacity		
				32nds	in.	in.	in.	in.	Single lbs.	Dual lbs.	A.P. psi
5543261	11R22.5	144/142 M	14	25	8.25	41.8	10.9	19.5	6,175	5,840	105
5542986	11R22.5	146/143 M	16	25	8.25	41.8	10.9	19.5	6,610	6,005	120
5543254	11R24.5	146/143 M	14	25	8.25	43.9	10.9	20.5	6,610	6,005	105
5542988	11R24.5	149/146 M	16	25	8.25	43.9	10.9	20.5	7,160	6,610	120
8200196	295/75R22.5	144/141 L	14	25	9.00	40.5	10.8	20.2	6,175	5,675	110
8200195	285/75R24.5	144/141 L	14	25	8.25	41.9	10.8	19.6	6,175	5,675	110



The S768 EFT is a premium closed shoulder drive tire, designed with a wide shoulder featuring tapered lateral edges for enhanced lateral stability. The S768 EFT also features stone ejector buttons that reduce stone retention, and an extra-deep tread depth for enhanced tread life.

Features & Benefits

- Wide footprint and square shoulder design for improved stability and mileage.
- Extra-deep tread pattern with special compound for extended tread life.
- Multi-sipes improve traction in wet conditions and dissipate heat for prolonged tread life.
- Stone ejectors protect tire from stone drilling.
- SmartWay Verified for lower rolling resistance and excellent fuel efficiency on highways.

Applications:

- Line-Haul Trucks
- Regional Trucks
- Intrastate and Interstate Buses



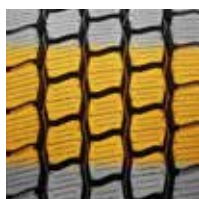


S768 EFT



S757 SUPER REGIONAL ALL-WEATHER DRIVE

Code	Size	LI / SR	PR	T.D.	RIM	O.D.	S.W.	S.L.R.	Load Capacity		
				32nds	in.	in.	in.	in.	Single	Dual	A.P.
									lbs.	lbs.	psi
5542490	11R22.5	146/143 L	16	26	8.25	41.9	11.0	19.5	6,610	6,005	120
5542494	11R24.5	149/146 L	16	26	8.25	43.9	11.0	20.4	7,160	6,610	120



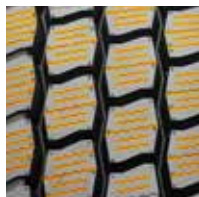
The S757 represents a new generation of Sailun drive tires. The S757 is an all-weather drive tire engineered for traction and mileage in line-haul and regional service applications. The extra-wide footprint and solid shoulders improve stability and handling. The lug tread pattern and siping improves grip, and the 4 zig-zag channels evacuate water away from the tread face. The S757's 26/32" tread depth provides long tread life and lower cost per mile.

Features & Benefits

- Extra-wide footprint promotes stability, improved handling, even treadwear, and long tread life.
- Extensive sipes improve traction in wet conditions and dissipate heat for prolonged tread life.
- Tie-bars on external lugs add rigidity to lugs to prevent irregular wear and improve stability.

Applications:

- Regional Trucks
- Pick-up and Delivery Trucks
- Line-Haul Trucks





S757

SAILUN **S753** **OPEN SHOULDER DRIVE**

Code	Size	LI / SR	PR	T.D.	RIM	O.D.	S.W.	S.L.R.	Load Capacity		
									Single	Dual	A.P.
				32nds	in.	in.	in.	in.	lbs.	lbs.	psi
5543673*	10R22.5	141/139 M	14	23	7.50	40.6	10.0	18.7	5,675	5,355	115
5543264	11R22.5	144/142 M	14	25	8.25	41.8	10.9	19.3	6,175	5,840	105
5542971	11R22.5	146/143 M	16	25	8.25	41.8	10.9	19.3	6,610	6,005	120
5543251	11R24.5	146/143 M	14	25	8.25	43.9	10.9	20.5	6,610	6,005	105
5542987	11R24.5	149/146 M	16	25	8.25	43.9	10.9	20.5	7,160	6,610	120
5542386*	255/70R22.5	140/137 L	16	24	7.50	36.9	10.0	17.1	5,510	5,070	120
5540527	295/75R22.5	144/141 L	14	25	9.00	40.5	10.8	20.2	6,175	5,675	110
5540526	285/75R24.5	144/141 L	14	25	8.25	41.9	10.8	19.6	6,175	5,675	110

* Non-EFT Tire



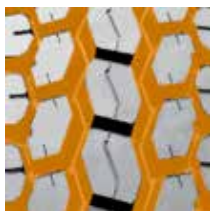
The S753 is an open shoulder drive, excellent for regional and pickup applications. Featuring a center interlocking tread block designed for improved stability, the S753 delivers exceptional tread life.

Features & Benefits

- Open shoulder design and tread grooves promote self-cleaning characteristics and improve traction.
- Central and edge siping for improved traction.
- Extra-strong casing design for enhanced durability.
- Integrated central lugs for improved stability.
- SmartWay Verified for lower rolling resistance and excellent fuel efficiency on highways.

Applications:

- Pickup and Delivery Trucks
- Intrastate and Interstate Buses
- Regional Trucks
- Line-Haul Trucks
- Local Buses
- Dump Trucks





S753 EFT



SW01 ALL-SEASON PREMIUM REGIONAL DRIVE



Code	Size	LI / SR	PR	T.D.	RIM	O.D.	S.W.	S.L.R.	Load Capacity		
									Single	Dual	A.P.
				32nds	in.	in.	in.	in.	lbs.	lbs.	psi
5540969	11R22.5	146/143 L	16	27	8.25	41.9	11.0	19.3	6,610	6,005	120
5542068	11R24.5	149/146 L	16	27	8.25	43.9	11.0	20.2	7,160	6,610	120



The Sailun SW01 is a premium regional and highway drive tire designed for four-season traction. This versatile tire is ideal for all weather conditions and features an aggressive symmetrical tread design for exceptional traction in mud, snow and ice conditions.

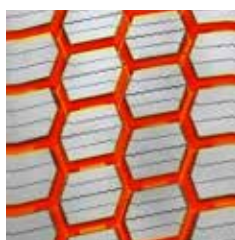
Features & Benefits

- 3 Peak Mountain Snowflake (3PMSF) certification for severe winter service.
- Extensive sipes in tread pattern for exceptional mud, snow and ice traction.
- Aggressive tread blocks for outstanding snow and mud handling.
- Tread pattern promotes self-cleaning and resists stone drilling.



Applications:

- Regional Trucks
- Line-Haul Trucks
- Pick-up and Delivery Trucks
- Dump Trucks
- Mix Concrete Trucks
- Refuse Trucks
- Cold Weather Conditions







S740

REGIONAL METRO ALL-WEATHER DRIVE



Code	Size	LI / SR	PR	T.D. 32nds	RIM in.	O.D. in.	S.W. in.	S.L.R. in.	Load Capacity		
									Single lbs.	Dual lbs.	A.P. psi
5541271	225/70R19.5	128/126 L	14	21	6.75	32.2	8.9	15.4	3,970	3,750	110
5541270	245/70R19.5	135/133 L	16	21	7.50	33.3	9.8	15.4	4,805	4,540	125



The Sailun S740 premium regional drive is one of the first light commercial truck tires to receive the 3 Peak Mountain Snowflake (3PMSF) certification. The S740's combination of aggressive tread block design and extensive siping make this tire ideal for wet, mud, snow and ice conditions. The 3PMSF symbol lets you know that this is a superior performing all-weather tire that has met the requirements for severe snow service.

Features & Benefits

- Extensive sipes in tread pattern for exceptional ice and snow traction.
- Aggressive tread blocks for outstanding snow and mud handling.
- Open tread pattern cleans out well in snow and mud conditions.
- 3 Peak Mountain Snowflake denotes a true winter tire.



Applications:

- Regional Trucks
- Pick-up and Delivery Trucks
- Tow Trucks
- Cold Weather Conditions





S740 

SAILUN **S737** REGIONAL METRO DRIVE

Code	Size	LI / SR	PR	T.D.	RIM	O.D.	S.W.	S.L.R.	Load Capacity		
									Single	Dual	A.P.
				32nds	in.	in.	in.	in.	lbs.	lbs.	psi
8244979	215/75R17.5	135/133 L	16	19	6.00	30.5	8.1	14.1	4,805	4,540	125
8244983	225/70R19.5	128/126 L	14	20	6.75	32.2	8.6	15.0	3,970	3,750	110
8244986	245/70R19.5	133/131 L	14	21	7.50	33.4	9.6	15.5	4,540	4,300	110
5542990	245/70R19.5	136/134 M	16	21	7.50	33.4	9.6	15.5	4,940	4,675	120



The S737 is a regional pickup and delivery drive tire, with 6-interlocking tread blocks and a symmetrical design engineered to promote even wear throughout the tire's life. Tapered lateral grooves make the S737 a performer in all-weather applications.

Features & Benefits

- Integrated tie bars reduce irregular wear and promote increased stability.
- Angled lug and siping design improves overall traction and wet grip.
- M&S rated, all-weather lug tread designed for regional use.
- Lug-to-void ratio optimized for self-cleaning and excellent traction.



Applications:

- Pickup and Delivery Trucks
- Regional Trucks
- RVs
- Tow Trucks





S737



S811

MIXED SERVICE ALL-POSITION

Code	Size	LI / SR	PR	T.D.	RIM	O.D.	S.W.	S.L.R.	Load Capacity		
									Single	Dual	A.P.
				32nds	in.	in.	in.	in.	lbs.	lbs.	psi
8245543	9.00R20 ^	144/142 K	16	19	7.00	40.2	10.0	18.8	6,170	5,840	130
8200006	10.00R20 ^	149/146 K	18	21	7.50	41.5	11.0	19.1	7,160	6,610	135
1000645	11.00R20 ^	152/149 K	18	21	8.00	42.7	11.5	19.7	7,830	7,160	135

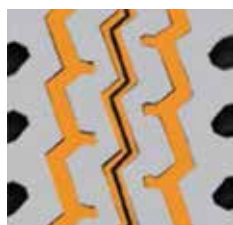
^ Denotes Tube Type



The Sailun S811 is an all-position rib suitable for both on and off-road applications. The S811 was engineered with extended tread life in mind, and designed to deliver class-leading cut and chip resistance.

Features & Benefits

- Four-rib design with zigzag patterns for stone protection.
- Deep arrowhead shoulder grooves for maximum traction in rough terrain situations.
- Extra-deep tread design and unique compound for extended tread life.



Applications:

- Regional Trucks
- Dump Trucks
- Mix Concrete Trucks
- Refuse Trucks
- Logging Trucks





S811



SAILUN

S815

MIXED SERVICE ALL-POSITION

Code	Size	LI / SR	PR	T.D.	RIM	O.D.	S.W.	S.L.R.	Load Capacity		
									Single	Dual	A.P.
				32nds	in.	in.	in.	in.	lbs.	lbs.	psi
8244551	11R22.5	146/143 K	16	23	8.25	41.7	10.9	19.4	6,610	6,005	120
8200222	12R22.5	152/148 L	16	21	9.00	42.9	11.8	19.9	7,830	6,940	123
8244558	11R24.5	149/146 K	16	23	8.25	43.7	10.9	20.4	7,160	6,610	120
5545709	255/70R22.5	140/137 L	16	<i>Available Q2 2020</i>							
8244589	275/70R22.5	148/145 K	16	22	8.25	37.7	10.7	17.7	6,940	6,395	130
8244471	315/80R22.5	161/157 G	20	22	9.00	42.4	12.1	19.9	10,200	9,090	130



The S815 is a mixed service tread, featuring a chip-resistant compound ideally suited for off-road and construction applications. A zigzag tread pattern design reduces stone retention, while maximizing traction under all applications. Sidewall protectors are engineered to provide an enhanced level of protection to the casing.

Features & Benefits

- Large, deep shoulder grooves for improved traction and heat dissipation.
- Interlocking ribs promote improved stability and smoother wear.
- Wide footprint and unique shoulder design for improved stability.
- Specially formulated compound and deep tread depth for improved tread life.
- Stone ejectors protect tire from stone drilling.

Applications:

- Dump Trucks
- Mix Concrete Trucks
- Regional Trucks
- Regional Trailers
- Multi-Axle Trailers
- Spread-Axle Trailers
- Dump Trailers





S815

SAILUN **S825** MIXED SERVICE WIDE BASE

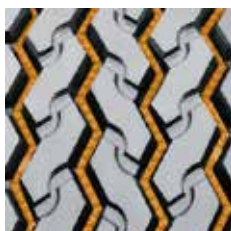
Code	Size	LI / SR	PR	T.D.	RIM	O.D.	S.W.	S.L.R.	Load Capacity		
				32nds	in.	in.	in.	in.	Single	Dual	A.P.
8244651	385/65R22.5	158 K	18	21	11.75	42.2	14.9	19.8	9,370	N/A	120
8244655	425/65R22.5	165 K	20	23	12.25	44.3	16.4	20.3	11,400	N/A	120
1001333	445/65R22.5	168 K	20	21	13.00	45.3	17.5	20.7	12,300	N/A	120



The S825 is an all-position mixed service tire, engineered with a rubber compound that resists high-scrub and off-road applications. Stone ejector buttons reduce tire damage, and angled tread blocks are designed to deliver excellent wet traction.

Features & Benefits

- Wide footprint and unique shoulder design for improved stability.
- Interlocking lugs promote improved stability and smoother wear.
- Specially formulated compound for improved tread life.
- Stone ejectors protect tire against stone drilling.



Applications:

- Dump Trucks
- Refuse Trucks
- Mix Concrete Trucks
- Regional Trucks





S825



S911

MIXED SERVICE DRIVE

Code	Size	LI / SR	PR	T.D.	RIM	O.D.	S.W.	S.L.R.	Load Capacity		
				32nds	in.	in.	in.	in.	Single	Dual	A.P.
									lbs.	lbs.	psi
8245745	10.00R20 ^	149/146 G	18	23	7.50	41.7	10.8	19.4	7,165	6,615	135

^ Denotes Tube Type



The S911 is designed for mixed service applications. The extra-deep tread provides long original life and is made with special compounds for resistance to cuts, chips, tearing and irregular wear.

Features & Benefits

- Extra-deep tread for long original life.
- Directional tread provide aggressive traction.
- Special compounds for resistance to cuts, chips, tearing and irregular wear.
- Outstanding breaking and stability for off-road applications.



Applications:

- Mix Concrete Trucks
- Dump Trucks





S911



S758 ON/OFF-ROAD TRACTION

Code	Size	LI / SR	PR	T.D.	RIM	O.D.	S.W.	S.L.R.	Load Capacity		
									Single	Dual	A.P.
				32nds	in.	in.	in.	in.	lbs.	lbs.	psi
5543059	11R22.5	146/143 K	16	31	8.25	42.2	10.9	19.6	6,610	6,005	120
5543060	11R24.5	149/146 K	16	31	8.25	43.9	10.9	20.6	7,160	6,610	120



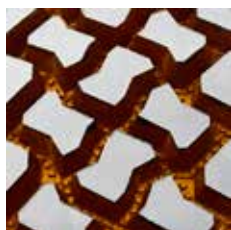
The S758 is designed for severe off-road traction applications. With an extra-deep 31/32" tread depth and a rubber compound engineered to resist the most demanding environments, the S758 is ideal for construction, logging, and off-road environments. Stone ejectors resist the damages caused by stone retention, and an open shoulder with tapered sidewalls aid in lateral stability.

Features & Benefits

- Open grooves to maximize self-cleaning.
- Stone ejectors protect tire against stone drilling.
- Extra-deep tread (31/32") tread depth.
- M&S lug pattern designed specifically for on and off-road applications.

Applications:

- Dump Trucks
- Logging Trucks
- Mix Concrete Trucks





S758

SAILUN **S917** ON/OFF-ROAD TRACTION

Code	Size	LI / SR	PR	T.D.	RIM	O.D.	S.W.	S.L.R.	Load Capacity		
									Single	Dual	A.P.
				32nds	in.	in.	in.	in.	lbs.	lbs.	psi
8256851	11R22.5	148/145 G	16	31	8.25	42.1	10.9	19.6	6,940	6,390	123
8256841	12R22.5	150/147 G	16	31	9.00	43.5	12.1	20.2	7,390	6,780	120
1001252	11R24.5	149/146 G	16	31	8.25	43.9	11.0	20.6	7,160	6,610	120
8246837	12.00R24 ^	160/157 F	20	32	8.50	48.7	12.4	22.8	9,920	9,090	120

^ Denotes Tube Type



The Sailun S917 drive tire has been engineered to perform in demanding off-road conditions, such as mining, construction and logging applications. The S917 features an aggressive multi-lug tread design for exceptional off-road traction and an enhanced rubber compound to resist cuts and chunking. Open shoulder ribs deliver superior stability and resistance to uneven wear. The S917's deep 31/32" tread depth provides long tread life and an exceptional cost per mile.

Features & Benefits

- Aggressive multi-lug design.
- Deep tread depth for excellent tread life.
- Open shoulder design for excellent traction.

Applications:

- Logging Trucks
- Ready Mix Trucks
- Refuse Trucks
- Dump Trucks





S917

MEDIUM RADIAL TRUCK LIMITED WARRANTY

Applies to tires purchased on or after December 1, 2017

ELIGIBILITY

This limited warranty provides two separate coverage benefits: (1) a limited warranty with respect to defects in material, workmanship or design; and (2) a limited radial casing retread warranty. You are eligible for the benefits of this limited warranty if the Sailun Medium Radial Truck Tire was purchased on or after December 1, 2017 and you are the original owner of this tire and it bears the prescribed Department of Transportation (DOT) identification number and has been continuously installed on the vehicle on which it was originally installed and no warranty exclusion or exception applies.

LIMITED WARRANTY AGAINST DEFECTS

A Sailun Medium Radial Truck Tire covered by this limited warranty will be replaced with a comparable new Sailun tire or comparable tire marketed by TBC Corporation without charge for the tire if it becomes unserviceable due to a defect in design, workmanship, or material during the first 50% of the original usable tread life (The original tread minus 2/32") for up to six (6) years from the original purchase date (without proof of purchase, the tire's date of manufacture will be used to determine age). There may be fees and/or taxes associated with the mounting and balancing of the comparable new replacement tire; please see the service provider for any cost details.

If a Sailun Medium Radial Truck Tire becomes unserviceable due to a defect in design, workmanship, or material after the first 50% of the original tread life you will be entitled to a prorated percentage allowance applicable to the purchase price of a comparable new Sailun Medium Radial Truck Tire or other comparable tire brand marketed by TBC Corporation. The amount of the allowance is determined based on the percentage of the original "Useable Tread" remaining when the tire is presented for adjustment. This percentage is applied to the new warranty replacement tire's purchase price. You are responsible for paying for the price of the warranty replacement tire after the appropriate warranty allowance is deducted plus the charges for mounting and balancing the replacement tire as well as any applicable fees and/or taxes. Once the Useable Tread of a Sailun Medium Radial Truck Tire has been exhausted, the coverage and benefits of this limited warranty for defects in material and workmanship will terminate. However, a casing retread warranty allowance may apply, see below.

COMPUTING REMAINING USEFUL TREAD

The remaining "Useful Tread" of your Sailun Medium Radial Truck Tire is computed as a percentage of the original tire's usable tread depth. These depths vary by tire size. The original usable tread does not include the last 2/32nd inch (1.6 millimeters) of tread depth because tires become unsafe for use and must be replaced to avoid accident or injury when the tread depth remaining is 2/32" or less. Because tires do not always wear evenly, tread depth may vary depending where on the tire's tread depth is measured. The lowest depth on the tire is used to determine the remaining tread life for purposes of warranty replacement.

LIMITED RADIAL CASING RETREAD WARRANTY

You will be eligible for a radial casing warranty allowance from TBC Corporation that will be applied to the purchase price of a new Sailun Medium Radial Truck Tire or a comparable new tire if your Sailun Medium Radial Truck Tire cannot be retreaded before the first to occur

of the following: (a) the tire has been retreaded two times; or (b) six (6) years from the original purchase date (without proof of purchase, the tire's date of manufacture will be used to determine age). The limited retread warranty coverage of the radial casing of your new Sailun Medium Radial Truck Tire may continue beyond the end of the tire's useful tread life. Sailun Medium Radial Truck Tire size 445/50R22.5 and those tires used in off-highway service (such as mining & logging) are excluded and the tires are not covered under this limited radial casing retread warranty. TBC Corporation will provide the following predetermined radial casing allowances if this limited warranty applies:

TIRE SIZE	CASING ALLOWANCE
235/85R16, 215, 235/75R17.5	\$15.00
225, 245, 265/70R19.5	\$30.00
255, 275/70R22.5	\$65.00
10R22.5	\$45.00
11R22.5, 295/75R22.5	\$65.00
12R22.5	\$70.00
11R24.5	\$70.00
285/75R24.5	\$75.00
315/80R22.5	\$70.00
385/65R22.5	\$75.00
425, 445/65R22.5	\$80.00

DEFINITION OF A COMPARABLE TIRE

For the purposes of your limited warranty against defects and the limited radial casing warranty, a "comparable" tire will be supplied if a matching new Sailun Medium Radial Truck Tire is out of production or is unavailable when the tire is presented for warranty replacement. In which case, the warranty replacement tire may be substituted and will be a tire of equal price, quality and construction. A comparable tire may also have a different sidewall or tread configuration. If the purchaser requests a higher-priced replacement tire instead, the purchaser must pay the price difference for the "upgrade" after the appropriate prorated allowance has been deducted.

WARRANTY EXCLUSIONS AND LIMITATIONS

The exclusions and limitations on the applicability of this limited warranty set forth in this section and other sections should be read carefully because they may determine whether you are entitled to a warranty replacement or a warranty replacement allowance. The limited warranty provided for the Sailun Medium Radial Truck tire you purchased does not apply if the tire failed because of any one of the following:

- tires installed on a vehicle registered or normally used outside the United States
- the tire was transferred to another vehicle after it was originally installed
- the tire is branded as "Blemish" or "NA" or the molded DOT number has been removed or disfigured
- the tire was repaired only with a self-vulcanizing plug, improper section repairs or in a manner that does not comply with Rubber Manufacturers Association standards
- tire failures caused by road hazard, potholes, or collision damage

- vandalism, theft, off-road use, long-term improper storage or other abuse
- improper mounting procedures or applications
- over and under inflation, overloading, or failure to maintain proper tire pressure
- addition of liquids, solids or gases (other than air, nitrogen, carbon dioxide) such as sealers or balancing materials
- ozone or weather cracks or checking occurring four (4) years after the date of purchase or, if that proof is not available, four (4) years after the DOT serial date
- mechanical failures, improper alignment, or brake and shock failure
- the wheel on which the tire is mounted is defective or fails
- tires with "irregular tread wear" (which is defined as a tread groove depth differences of 2/32nds of an inch or more on the same tire)

NOTE: THIS WARRANTY GIVES YOU SPECIFIC RIGHTS, WHICH VARY FROM STATE TO STATE. SOME STATES DO NOT ALLOW THE EXCLUSION OR LIMITATION OF INCIDENTAL OR CONSEQUENTIAL DAMAGE OR HOW LONG AN IMPLIED WARRANTY MAY LAST, SO CERTAIN LIMITATIONS OR EXCLUSIONS HEREIN MAY NOT APPLY TO YOU. HOWEVER, TO THE EXTENT PERMITTED BY THE LAWS OF YOUR STATE, TBC CORPORATION DISCLAIMS ALL WARRANTIES EXPRESS OR IMPLIED OTHER THAN THE WARRANTIES STATED IN THIS LIMITED WARRANTY, INCLUDING BUT NOT LIMITED TO THE IMPLIED WARRANTIES OF MERCHANTABILITY AND FITNESS FOR A PARTICULAR PURPOSE. ANY IMPLIED WARRANTY OF MERCHANTABILITY, FITNESS FOR A PARTICULAR PURPOSE OR OTHERWISE IS LIMITED IN DURATION AND EXPIRES WHEN THE TIRE'S USEABLE TREAD IS EXHAUSTED AS SPECIFIED IN THIS LIMITED WARRANTY. TO THE EXTENT PERMITTED BY LAW, THIS WARRANTY DOES NOT COVER AND EXPRESSLY EXCLUDES ANY COVERAGE OR LIABILITY FOR PUNITIVE DAMAGES, FOR LOSS OF TIME, INCONVENIENCE, LOSS OF USE OF YOUR VEHICLE OR TIRE, LOST PROFITS, OR ANY OTHER INCIDENTAL OR CONSEQUENTIAL DAMAGES. THIS IS THE ONLY WARRANTY THAT APPLIES TO THE SAILUN MEDIUM TRUCK TIRES PURCHASED BY YOU AND SUPERSEDES AND REPLACES THE TERMS OF ANY PREVIOUS WARRANTY. NOTHING IN THIS LIMITED WARRANTY IS INTENDED TO BE A REPRESENTATION THAT TIRE FAILURES CANNOT OCCUR. TBC CORPORATION NEITHER ASSUMES NOR EXTENDS, NOR AUTHORIZES ANY OTHER PERSON OR ENTITY TO ASSUME OR EXTEND ON ITS BEHALF, ANY OTHER OR DIFFERENT WARRANTY OBLIGATION.

This limited warranty is the entire warranty given by TBC Corporation – TBC Corporation's complete obligation is set forth herein. No one has the authority to imply, suggest, agree, represent, warranty or promise anything contrary to the terms of this Limited Warranty.

OWNERS OBLIGATIONS

To make a claim under this Limited Warranty, you must present the warranted tire to an authorized Sailun Medium Radial Truck Tire dealer for adjustment along with the following items: proof of purchase showing that you purchased tire and the vehicle on which the tire was originally installed. Your original invoice when you purchased the tire should contain this information. You are responsible for payment for any extra products, services, or upgrades, including any fees and taxes related thereto, that you request that are not covered by the limited warranty.

ADJUSTMENT PROCEDURE

Please call TBC Corporation's warranty toll free number at: 1-800-238-6469 (Consumer Relations). Our product Warranty Specialist will confirm the Sailun Tire, and discuss your tire issue with you. They will find a Sailun Medium Radial Truck Tire dealer nearest you to whom you may take your Sailun Medium Radial Truck Tire for inspection and any applicable warranty adjustment. TBC Corporation will work with the tire dealer to supply a replacement Sailun Medium Radial Truck Tire or comparable tire in an efficient manner.

IMPORTANT SAFETY INFORMATION

Any tire, no matter how well constructed, may fail due to improper installation, maintenance or service, creating the risk of property damage and/or serious or fatal injury. To help keep you safe, here is a non-exhaustive list of practices with which you should comply:

- **ONLY PROFESSIONALLY TRAINED PERSONNEL SHOULD MOUNT AND BALANCE TIRES.**
- Property damage and serious or fatal injury can also result from improper tire mounting and inflation procedures which can cause the tire beads to break with explosive force during installation of the tire on the wheel rim. This can also occur when tire size is not properly matched to the wheel's rim. Serious injury or damage can also occur if wheel rim and tire bead are not properly lubricated prior to installation or maximum tire pressure is exceeded when seating the tire bead on the rim.
- Never drive on tires that have less than 2/32nds of an inch of tread remaining; replace tires as soon as the tread reaches the tread wear indicators molded into the tread grooves of the tire which reveal when the tread depth remaining is 2/32nds of an inch.
- Proper tire inflation is essential. Under-inflation produces flexing of sidewalls and builds up heat to the point that premature tire failure may occur. Over-inflation can cause the tire to be more susceptible to impact damage, but Do Not reduce pressure when tires are hot.
- Check air pressure at least monthly when tires are "cold" – a "cold" tire is one which has been stationary for a minimum of 2 hours or driven less than 2 miles. Use an accurate tire air pressure gauge.
- Never overload the tires. The maximum load capacity and maximum inflation pressure are molded into the sidewall of your tire. Overloading a tire will result in the build up of excessive heat which can lead to early tire failure. Overloading a tire will render a tire ineligible for warranty.
- Avoid damaging objects (potholes, glass, rocks, curbs, etc.), which may cause internal tire damage. Continued use of a tire that has suffered internal damage (which may not be visible externally) can lead to serious/dangerous tire failure.
- Inspection and the determination of the internal damage to a tire requires dismounting of the tire from the wheel and examination – all of which should be done only by a tire professional.
- Excessive speeds create heat buildup in a tire, leading to possible tire failure. "Excessive speed" is a speed that does not take into consideration the weight of the load/and or the condition of the road you are traveling on. Never travel above the legal posted limit and slow down to a proper speed accordingly.
- Properly load and distribute the weight of the load in your vehicle. Improper weight distribution can have adverse effects on the safety of the vehicle and the performance of the tires.

TIRE LOAD LIMITS (lbs.) AT VARIOUS COLD INFLATION PRESSURES (kPA/psi)

TIRE SIZE	kPA		450		480		520	550		590		620	
	psi		65		70		75	80		85		90	
215/75R17.5	DUAL	lbs.			3305		3415	3525(E)	124	3640		3750	
	SINGLE	lbs.			3525		3640	3750(E)	126	3860		3970	
235/75R17.5	DUAL	lbs.			4190		4300	4410(E)	132	4510		4675	
	SINGLE	lbs.			4410		4510	4675(E)	134	4805		4940	
245/70R17.5	DUAL	lbs.			4190		4300	4410(E)	132	4510		4675	
	SINGLE	lbs.			4410		4510	4675(E)	134	4805		4940	
225/70R19.5	DUAL	lbs.	2600(D)	114	2720		2860	3000(E)	119	3115		3245	
	SINGLE	lbs.	2755(D)	116	2895		3040	3195(E)	121	3315		3450	
245/70R19.5	DUAL	lbs.	2910		3070		3220	3415		3515		3655	
	SINGLE	lbs.	3085		3265		3425	3640		3740		3890	
265/70R19.5	DUAL	lbs.	3195		3430		3600	3750		3930		4095	
	SINGLE	lbs.	3415		3650		3830	3970		4180		4355	
9.00R20	DUAL	lbs.			3860(D)	127	4045	4230		4410(E)	132	4585	
	SINGLE	lbs.			4080(D)	129	4280	4480		4675(E)	134	4850	
10.00R20	DUAL	lbs.			4380		4580	4760		4950		5205(F)	138
	SINGLE	lbs.			4530		4770	4990		5220		5510(F)	140
11.00R20	DUAL	lbs.			4780		4990	5190		5390		5675(F)	141
	SINGLE	lbs.			4940		5200	5450		5690		6005(F)	143
9R22.5	DUAL	lbs.			3270		3410	3550		3690		3860(E)	127
	SINGLE	lbs.			3370		3560	3730		3890		4080(E)	129
10R22.5	DUAL	lbs.			3860		4045	4230		4410(E)	132	4585	
	SINGLE	lbs.			4080		4280	4480		4675(E)	134	4850	
11R22.5	DUAL	lbs.			4380		4580	4760		4950		5205(F)	138
	SINGLE	lbs.			4530		4770	4990		5220		5510(F)	140
12R22.5	DUAL	lbs.			4780		4990	5190		5390		5675(F)	141
	SINGLE	lbs.			4940		5200	5450		5690		6005(F)	143
315/80R22.5	DUAL	lbs.					5345	5675		5840		6070	
	SINGLE	lbs.					5875	6175		6415		6670	
295/80R22.5	DUAL	lbs.					4860	5070		5305		5525	
	SINGLE	lbs.					5340	5510		5830		6070	
295/75R22.5	DUAL	lbs.			4095		4300	4540		4690		4885	
	SINGLE	lbs.			4500		4725	4940		5155		5370	
275/70R22.5	DUAL	lbs.						4805		4940		5070	
	SINGLE	lbs.						5205		5355		5510	
255/70R22.5	DUAL	lbs.	3415		3585		3765	3970		4110		4275	
	SINGLE	lbs.	3640		3815		4005	4190		4370		4550	
385/65R22.5	DUAL	lbs.											
	SINGLE	lbs.	6060		6380		6720	6940		7350		7650	
425/65R22.5	DUAL	lbs.											
	SINGLE	lbs.	7210		7590		7990	8270		8740		9100	
445/65R22.5	DUAL	lbs.											
	SINGLE	lbs.	7800		8230		8660	9090		9480		9870	
445/50R22.5	DUAL	lbs.											
	SINGLE	lbs.	6175		6570		6940	7310		7680		8030	
12.00R24	DUAL	lbs.			6120		6390	6650		6910		7160	
	SINGLE	lbs.			6330		6660	6980		7280		7580	
11R24.5	DUAL	lbs.			4660		4870	5070		5260		5510(F)	140
	SINGLE	lbs.			4820		5070	5310		5550		5840(F)	142
285/75R24.5	DUAL	lbs.					4340	4540		4740		4930	
	SINGLE	lbs.					4770	4940		5210		5450	

* Every effort has been made to verify the accuracy of the listed specifications. TBC Corporation and TBC Brands cannot be held responsible for any discrepancies, and as such, the information should be considered as approximate.

	655		690		720		760		790		825		860		900	
	95		100		105		110		115		120		125		130	
	3860(F)	127	3970		4080		4190(G)	130	4300		4410		4540(H)	133		
	4080(F)	129	4190		4300		4410(G)	132	4540		4675		4805(H)	135		
	4805(F)	135	4940		5070		5205(G)	138	5355		5510		5675(H)	141		
	5070(F)	137	5205		5355		5510(G)	140	5675		5840		6005(H)	143		
	4805(F)	135	4940		5070		5205(G)	138	5355		5510		5675(H)	141		
	5070(F)	137	5205		5355		5510(G)	140	5675		5840		6005(H)	143		
	3415(F)	123	3490		3615		3750(G)	126	3855		3970(H)	128				
	3640(F)	125	3715		3845		3970(G)	128	4100		4190(H)	130				
	3860(F)	127	3940		4075		4300(G)	131	4345		4540(H)	133				
	4080(F)	129	4190		4335		4540(G)	133	4620		4805(H)	135				
	4300		4405		4415		4675(G)	134								
	4540		4685		4850		5070(G)	137								
	4760		4940(F)	136	5080		5220		5355(G)	139	5515		5675(H)	141		
	5025		5205(F)	138	5360		5515		5675(G)	141	5840		6005(H)	143		
	5415		5625		5840(G)	142	5895		5950		6005(H)	143	6310		6610(J)	146
	5730		5950		6175(G)	144	6320		6465		6610(H)	146	6890		7160(J)	149
	5785		5895		6005(G)	143	6265		6525		6780(H)	147				
	6205		6405		6610(G)	146	6870		7130		7390(H)	150				
	4005		4150		4300(F)	131	4425		4550		4675(G)	134				
	4235		4390		4540(F)	133	4675		4810		4940(G)	136				
	4760		4940(F)	136	5075		5210		5355(G)	139						
	5025		5205(F)	138	5360		5515		5675(G)	141						
	5415		5625		5840(G)	142	5895		5950		6005(H)	143				
	5730		5950		6175(G)	144	6320		6465		6610(H)	146				
	5785		5895		6005(G)	143	6265		6525		6780(H)	147				
	6205		6405		6610(G)	146	6870		7130		7390(H)	150				
	6395(G)	145	6545		6770		6940(H)	148	7210		7610(J)	151	7910		8270(L)	154
	6940(G)	148	7190		7440		7610(H)	151	7920		8270(J)	154	8690		9090(L)	157
	5840		5945		6150		6395		6550		6780(H)	147	6950		7160(J)	149
	6395		6535		6760		6940		7200		7390(H)	150	7640		7830(J)	152
	5070(F)	137	5260		5440		5675(G)	141	5795		6005(H)	143				
	5510(F)	140	5780		5980		6175(G)	144	6370		6610(H)	146				
	5205		5355		5510		5675		5840		6005		6175		6395(H)	145
	5675		5840		6005		6175		6395		6610		6780		6940(H)	148
	4410		4455		4610		4675(G)	134	4915		5070(H)	137				
	4675		4895		5065		5205(G)	138	5400		5510(H)	140				
	8050		8230		8510		8820		9050		9370(J)	158			9920(L)	160
	9370		9790		10100		10500(J)	162	10700		11400(L)	165				
	10200(H)	161	10600		11000		11400		11700		12300(L)	168			12800(M)	169
	8390		8740		9090		9370(J)	158	9780		10200(L)	161				
	7390(G)	150	7610		7830		8050(H)	153	8300		8540(J)	155				
	8050(G)	153	8310		8570		8820(H)	156	9100		9370(J)	158				
	5675		5840		6005(G)	143	6205		6405		6610(H)	146				
	6095		6350		6610(G)	146	6790		6970		7160(H)	149				
	5205(F)	138	5310		5495		5675(G)	141	5860		6175(H)	144				
	5675(F)	141	5835		6040		6175(G)	144	6440		6780(H)	147				



gosailun.com • tbcbrands.com • treadxpress.com • 1-866-822-4968